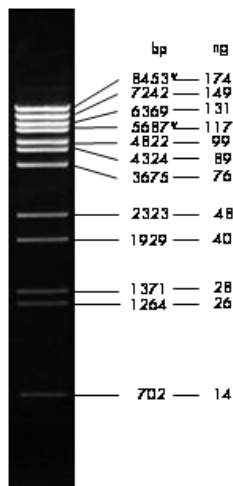




## λDNA/ BstEII Digest

ready-to-use

Cat. No.	Amount
M-106S	100 µg
M-106L	5 x 100 µg



1 µg loaded onto 1.0 % agarose

**For general laboratory use.**

**Shipping:** shipped on gel packs

**Storage Conditions:** store at -20 °C

Short term storage (up to 1 month) at 4 °C possible.

**Shelf Life:** 12 months

**Form:** liquid (supplied in Jena Bioscience 6x Green Gel Loading Buffer (#PCR-254-gr))

**Concentration:** 200 ng/µl

### Description:

The BstEII digest of λ DNA yields the following discrete fragments (in base pairs): 8453\*, 7242, 6369, 5687\*, 4822, 4324, 3675, 2323, 1929, 1371, 1264, 702, 224, 117.

The cohesive ends (12b cos site of bacteriophage) of fragments 8453 bp and 5687 bp may anneal and form an additional band. These fragments may be separated again by heating to 65 °C for 5 min and then cooling on ice for 3 min.

### Note:

Dilute in TE or other buffer of minimal ionic strength. DNA may denature if diluted in dH<sub>2</sub>O and subsequently heated.

### Recommended Load:

5 µl per lane

### Preparation:

Lambda DNA (48.502 bp) was completely digested by BstEII, phenol extracted, ethanol precipitated, dissolved in 10 mM Tris-HCl (pH 8.0) and 1 mM EDTA.