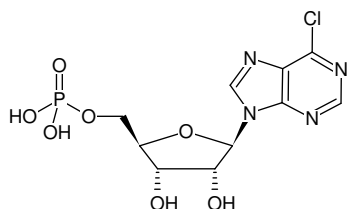


**6-Chloropurine-riboside-5'-monophosphate**

6-Chloropurine-riboside-5'-monophosphate, Sodium salt

Cat. No.	Amount
NU-142S	100 µl (10 mM)
NU-142L	5 x 100 µl (10 mM)



Structural formula of 6-Chloropurine-riboside-5'-monophosphate

For general laboratory use.**Shipping:** shipped on gel packs**Storage Conditions:** store at -20 °C

Short term exposure (up to 1 week cumulative) to ambient temperature possible.

Shelf Life: 12 months after date of delivery**Molecular Formula:** C₁₀H₁₂N₄O₇PCL (free acid)**Molecular Weight:** 366.65 g/mol (free acid)**Exact Mass:** 366.01 g/mol (free acid)**Purity:** ≥ 95 % (HPLC)**Form:** solution in water**Color:** colorless to slightly yellow**Concentration:** 10 mM - 11 mM**pH:** 7.5 ±0.5**Spectroscopic Properties:** λ_{max} 263 nm, ε 8.9 L mmol⁻¹ cm⁻¹ (Tris-HCl pH 7.5)