

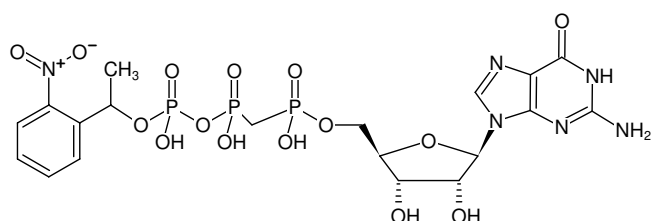


NPE-caged-GpCp

(NPE-caged-GMPCPP)

Guanosine-5'-[(α,β)-methylene]triphosphate, P³-(1-(2-nitrophenyl)-ethyl)-ester, Triethylammonium salt

Cat. No.	Amount
NU-306S	10 μ l (10 mM)
NU-306L	5 x 10 μ l (10 mM)



Structural formula of NPE-caged-GpCp

For general laboratory use.

Shipping: shipped on gel packs

Storage Conditions: store at -20 °C

Additional Storage Conditions: store dark

Short term exposure (up to 1 week cumulative) to ambient temperature possible.

Shelf Life: 12 months after date of delivery

Molecular Formula: C₁₉H₂₅N₆O₁₅P₃ (free acid)

Molecular Weight: 670.35 g/mol (free acid)

Exact Mass: 670.06 g/mol (free acid)

Purity: \geq 95 % (HPLC)

Form: solution in water

Color: colorless to slightly yellow

Concentration: 10 mM - 11 mM

pH: 7.5 \pm 0.5

Spectroscopic Properties: λ_{\max} 254 nm, ϵ 16.4 L mmol⁻¹ cm⁻¹ (Tris-HCl pH 7.5)

Selected References:

Derrick *et al.* (2012) The Nucleotide-Binding State of Microtubules Modulates Kinesin Processivity and Tau's Ability to Inhibit Kinesin Mediated Transport. *J. Biol. Chem.* **286** (50): 42873.

Katsuki *et al.* (2011) Preparation of Dual-Color Polarity-Marked Fluorescent Microtubule Seeds *Methods. Mol. Biol.* **777**:117.

Telley *et al.* (2011) Reconstitution and Quantification of Dynamic Microtubule End Tracking In Vitro Using TIRF Microscopy *Methods. Mol. Biol.* **777**:127.

Kalisch *et al.* (2011) Force Generation by Dynamic Microtubules In Vitro *Methods. Mol. Biol.* **777**:147.

Salvarelli *et al.* (2011) Independence between GTPase active sites in the Escherichia coli cell division protein FtsZ. *FEBS Lett.* **585** (24):3880.

Khrapunovich-Baine *et al.* (2011) Hallmarks of molecular action of microtubule stabilizing agents: effects of epothilone B, ixabepilone, peloruside A, and laulimalide on microtubule conformation. *J. Biol. Chem.* **286** (13):11765.

Antonio *et al.* (2011) Bacterial Tubulin Distinct Loop Sequences and Primitive Assembly Properties Support Its Origin from a Eukaryotic Tubulin Ancestor. *J. Biol. Chem.* **286** (22):19789.

Yusuke Oguchi *et al.* (2011) The bidirectional depolymerizer MCAK generates force by disassembling both microtubule ends *NATURE CELL BIOLOGY*. **13** (7):846.

Maurer SP *et al.* (2011) GTPyS microtubules mimic the growing microtubule end structure recognized by end-binding proteins (EBs) *Proc. Natl. Acad. Sci. U. S. A.* **108** (10):3988.

Ryuzo Kawamura *et al.* (2011) Formation of motile assembly of microtubules driven by kinesins *Smart Mater. Struct.* **20** (2011): 124007.