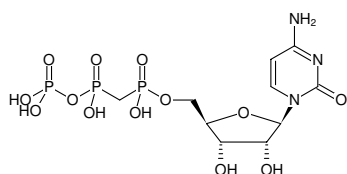


**CpCpp**

(CMPCPP)

Cytidine-5'-[(α,β)-methylene]triphosphate, Sodium salt

Cat. No.	Amount
NU-438S	100 μ l (10 mM)
NU-438L	5 x 100 μ l (10 mM)

Specific Ligands:Tubulin^[1]**Selected References:**Lass-Napiorkowska *et al.* (2016) Real-Time Observation of Backtracking by Bacterial RNA Polymerase. *Biochemistry* **55** (4):647-58.Heald *et al.* (1996) Self-organization of microtubules into bipolar spindles around artificial chromosomes in *Xenopus* egg extracts. *Nature* **382**:422.

Structural formula of CpCpp

For general laboratory use.**Shipping:** shipped on gel packs**Storage Conditions:** store at -20 °C

Short term exposure (up to 1 week cumulative) to ambient temperature possible.

Shelf Life: 12 months after date of delivery**Molecular Formula:** C₁₀H₁₈N₃O₁₃P₃ (free acid)**Molecular Weight:** 481.18 g/mol (free acid)**Exact Mass:** 481.01 g/mol (free acid)**CAS#:** 101553-55-3**Purity:** \geq 95 % (HPLC)**Form:** solution in water**Color:** colorless to slightly yellow**Concentration:** 10 mM - 11 mM**pH:** 7.5 \pm 0.5**Spectroscopic Properties:** λ_{\max} 271 nm, ϵ 9.0 L mmol⁻¹ cm⁻¹ (Tris-HCl pH 7.5)