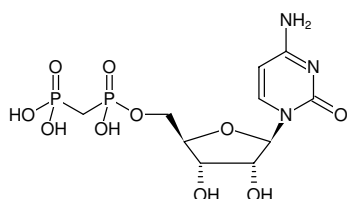


**CpCp**

(CMPCP)

Cytidine-5'-[(α,β)-methylene]diphosphate, Sodium salt

Cat. No.	Amount
NU-441S	150 μ l (10 mM)
NU-441L	5 x 150 μ l (10 mM)



Structural formula of CpCp

For general laboratory use.**Shipping:** shipped on gel packs**Storage Conditions:** store at -20 °C

Short term exposure (up to 1 week cumulative) to ambient temperature possible.

Shelf Life: 12 months after date of delivery**Molecular Formula:** C₁₀H₁₇N₃O₁₀P₂ (free acid)**Molecular Weight:** 401.20 g/mol (free acid)**Exact Mass:** 401.04 g/mol (free acid)**CAS#:** 3768-14-7**Purity:** \geq 95 % (HPLC)**Form:** solution in water**Color:** colorless to slightly yellow**Concentration:** 10 mM - 11 mM**pH:** 7.5 \pm 0.5**Spectroscopic Properties:** λ_{\max} 271 nm, ϵ 9.0 L mmol⁻¹ cm⁻¹ (Tris-HCl pH 7.5)