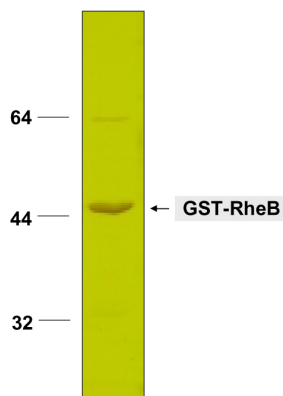




Rheb

Ras-related GTPase, GST-fusion
human, recombinant, *E. coli*

Cat. No.	Amount
PR-126	50 µg



Description:

Recombinant human Rheb expressed in *E. coli* as fusion protein with GST. The eukaryotic translational machinery is under tight control by environmental and metabolic cues including ambient nutrients, hormonal regulation and the energy status of the cell itself (1). The Ras-related small GTPase Rheb (Ras homologue enriched in brain) acts as a pivotal player upstream of mTOR and p70S6K to regulate global as well as selective protein translation in response to the above mentioned factors (2,3).

Selected References:

Arsham *et al.* (2006) Thinking globally and acting locally with TOR. *Curr Opin Cell Biol* **18**:589.

Garami *et al.* (2003) Insulin Activation of Rheb, a Mediator of mTOR/S6K/4E-BP Signaling, is Inhibited by TSC1 and 2. *Cell* **11**:1457.

Roux *et al.* (2004) Tumor-promoting phorbol esters and activated Ras inactivate the tuberous sclerosis tumor suppressor complex via p90 ribosomal S6 kinase. *Proc. Natl. Acad. Sci. USA* **101**:13489.

For general laboratory use.

Shipping: shipped on dry ice

Storage Conditions: store at -80 °C

Additional Storage Conditions: avoid freeze/thaw cycles

Shelf Life: 12 months

Molecular Weight: 47 kDa

Accession number: NM_005614

Purity: > 90 % (SDS-PAGE)

Form: liquid (Supplied in 25 mM HEPES pH 7.4, 5 mM MgCl₂ and 10 µM GTP)